

Jedox Release 2019.1

What's New



Dated: 20-Mar-2019

Copyright © Jedox AG

Copyright Reserved. Reproduction including electronic reproduction and substantive recovery - even of parts - only with the approval of Jedox AG. Legal steps may be taken in case of non-compliance.

Jedox, Worksheet-Server™, Supervision Server and Palo are trademarks or registered trademarks of Jedox AG. Microsoft and Microsoft Excel are trademarks or registered trademarks of the Microsoft Corp. All other trademarks are property of the respective companies.

For the purpose of readability, brand names and trademarks are not explicitly stressed. If a relevant description (e.g. TM or ®) is missing, it is not to be concluded that the name is freely available.

Table of Contents

1	What's New in Jedox Release 2019.1	5
1.1	General	5
1.1.1	Support for Office 2019	5
1.1.2	UI/UX enhancements	5
1.2	Jedox In-Memory DB	6
1.2.1	ATTN: changing passwords with direct cell writeback to be deprecated	6
1.2.2	BREAKING CHANGE: ODBO connector to be deprecated	6
1.2.3	IN PREVIEW: Storing dimensions in binary format	6
1.2.4	IN PREVIEW: Disable saving CSV files for dimensions	6
1.2.5	New palo.ini key for flight recorder file control	6
1.2.6	Quick calculation of consolidations with all-zero weights	6
1.2.7	Comments can be added to rules	6
1.2.8	Ability to hide cubes	7
1.3	Jedox Web General	7
1.3.1	New Business Logic – Previous Year	7
1.3.2	Multiple selection of tasks in the Scheduler	7
1.3.3	Increased performance for long/flat element lists in the Select Elements dialog	7
1.3.4	Connections to third-party systems in Administration	7
1.3.5	Manual login option for users without SSO	8
1.3.6	IN PREVIEW: Email notifications are configurable in the Scheduler templates	8
1.4	Jedox Web Spreadsheets	9
1.4.1	New handling of the button "View" in simple ribbon	9
1.4.2	Improved error message for writeback errors	9
1.5	Jedox Integrator	9
1.5.1	ATTN: Connection type MaxDB is deprecated	9
1.5.2	ATTN: Connection type JedoxXMLA to be deprecated	9
1.5.3	ATTN: Function type Java is to be deprecated	10
1.5.4	New connection type: CosmosDB	10
1.5.5	New extract type: CosmosSQL	10
1.5.6	Global Connections	10
1.5.7	Escaping of variable definitions	10
1.5.8	New language formatting supported for date functions	11
1.5.9	New API: Cube.loadCell	11
1.5.10	Password encryption in Integrator projects	11
1.6	Jedox Excel Add-in	11
1.6.1	IN PREVIEW: Jedox Web Subset Editor can now be enabled in the Excel Add-in	11

- 1.7 Setup 12
 - 1.7.1 New syntax for logging in OLAP server 12
- 1.8 Technical health 12
- 1.9 Tasks implemented since release 2018.4..... 13

1 What's New in Jedox Release 2019.1

This document gives an overview of the new features, enhancements, and fixes in Jedox Release 2019.1, which is currently available at <https://www.jedox.com/en/software/free-software-trial/>.

We are committed to keeping newer versions compatible with previous versions, especially solutions built with previous versions. Any changes in the software that would require a change in a solution built with the software will be announced during the ramp-up phase before the change goes into effect.

As more and more customers adopt Jedox as a service running in the cloud, reliability, performance, and above all security have become essential aspects of the offering. You want your data to be managed in a secure manner, accessible only to you and people you allow. You want to store your data in a service that is reliable and scales easily with your needs. You expect service that adds to and integrates seamlessly with additional services as they become available.

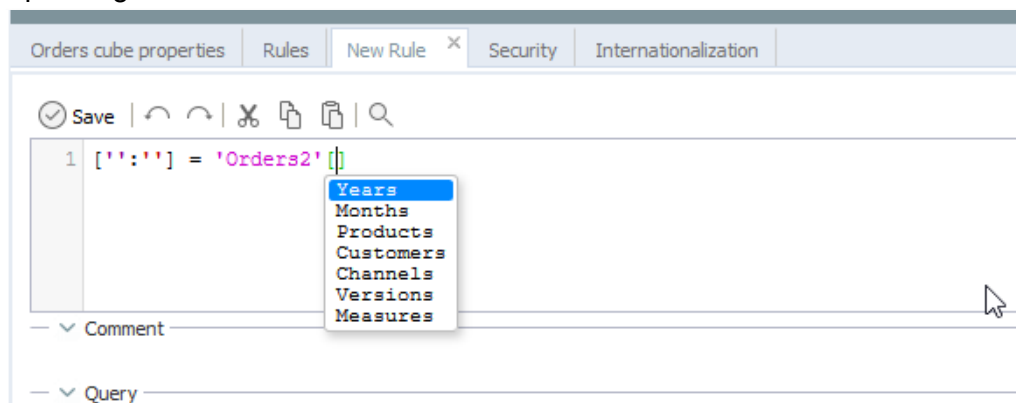
1.1 General

1.1.1 Support for Office 2019

Jedox Excel Add-in and Office Add-in now support Microsoft Office 2019.

1.1.2 UI/UX enhancements

- DynaRanges in Report mode are now expandable on single click. The mouse pointer will change to “pointing hand” when hovering over an expandable/collapsible DynaRange cell.
- Sandbox was enhanced for improved rendering on high-resolution displays
- Users who are logged out of an SSO/SAML-configured session now see a dialog with a link back to the login page. In case of SSO, clicking the link will start a new session without logging in manually.
- Improved drag & drop functionality in Data-Driven Modeling: it is now possible to drop fields in the DDM dialog below an existing field, to put them on a lower level in the dimension hierarchy.
- Auto-complete for Dynamic Cell Reference (DCR) in Rule Editor: the key combination ctrl + space shows a list of possible dimensions or cubes that can be used in the flexible rule syntax, depending on where the cursor is.



1.2 Jedox In-Memory DB

1.2.1 ATTN: changing passwords with direct cell writeback to be deprecated

Changing passwords directly via cell replace is to be deprecated in a future release. The only supported way to change passwords will be through the Admin settings in Jedox Web or Excel Add-in or with the API function `change_password`.

You can also change passwords using Groovy Scripts in Integrator.

1.2.2 BREAKING CHANGE: ODBO connector to be deprecated

ODBO connector is being deprecated. Support for this third-party connector will be discontinued as of Jedox 2019.3.

1.2.3 IN PREVIEW: Storing dimensions in binary format

Dimensions can now be saved in binary format, which speeds up load performance. This feature can be enabled in `palo.ini` by setting the value of the key `dimension-file-format` to `binary`. Note that databases containing dimensions stored in binary format are not portable between Linux and Windows.

1.2.4 IN PREVIEW: Disable saving CSV files for dimensions

Reduces time needed for saving dimension files by saving them as `.bin` rather than `.csv`. This feature can be enabled in the `palo.ini` with the key `no-csv-save-dim`.

1.2.5 New palo.ini key for flight recorder file control

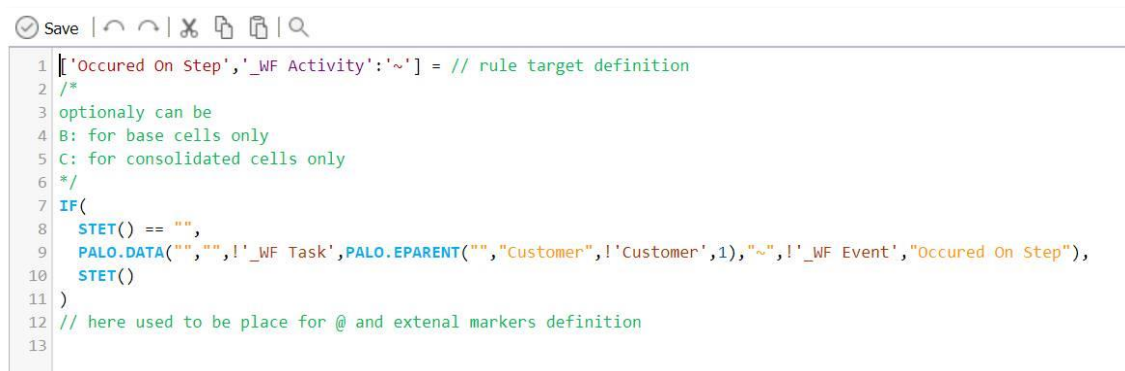
The new key, `disable-request-logging`, allows you to control whether the file `requests.txt`, which stores the last 10 executed OLAP requests, is created or updated.

1.2.6 Quick calculation of consolidations with all-zero weights

Calculations of base cells that are aggregated with zero weight in their parents are skipped, which speeds up performance.

1.2.7 Comments can be added to rules

Jedox In-Memory DB Server now allows both inline and block comments within rules, as well as persistent rule formatting, i.e., the comments and formatting remain even after the rule is stored in the In-Memory DB. Inline comments can be added with `//` and block comments can be added with `/* ... */` (see green text in screenshot below).



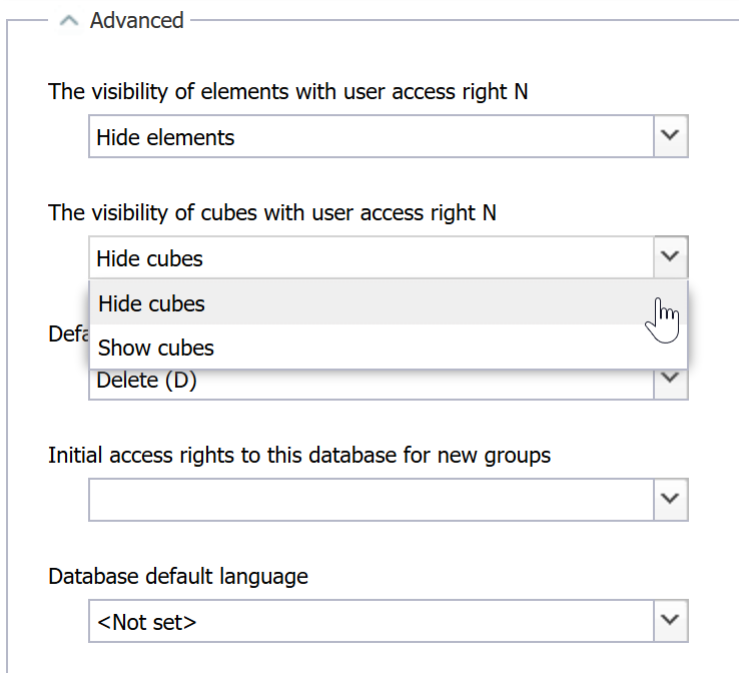
```

1  ['Occured On Step', '_WF Activity': '~'] = // rule target definition
2  /*
3  optionally can be
4  B: for base cells only
5  C: for consolidated cells only
6  */
7  IF(
8      STET() == "",
9      PALO.DATA("", "", !'_WF Task', PALO.EPARENT("", "Customer", !'Customer', 1), "~", !'_WF Event', "Occured On Step"),
10     STET()
11 )
12 // here used to be place for @ and external markers definition
13

```

1.2.8 Ability to hide cubes

Cubes can be completely hidden from users who don't have access to them. This feature is available in the advanced database properties tab in the Modeler in Jedox Web and Excel Add-in:



1.3 Jedox Web General

1.3.1 New Business Logic – Previous Year

This business logic adds rules for previous years to a cube and shows the 'Version': 'Actual' values of one year before on the 'Version': 'Previous Year' version.

1.3.2 Multiple selection of tasks in the Scheduler

It is now possible to select, delete, or execute multiple tasks in the Scheduler.

1.3.3 Increased performance for long/flat element lists in the Select Elements dialog

Jedox Web is now enhanced with automatic paging when enabling flat view for long lists in **Select Elements**.

1.3.4 Connections to third-party systems in Administration

You can now add and view connections of all types in the Connections panel in Administration. Connections of type Jedox OLAP can be used in all Jedox components (Excel Add-in, Jedox Web, Integrator). Connections of type Odbc are used only in Jedox Web. All other connection types are used only in Jedox Integrator. Permissions can be defined as in Jedox Integrator.

1.3.5 Manual login option for users without SSO

When SSO is configured, some users (e.g. admins) need to be able to manually log in without SSO (an account "admin" will usually not exist in the active directory/third-party authentication backend).

A flag can now be appended to the login URL of Jedox Web that will suppress the SSO login and instead show the classic login page: <https://<server address>/ui/login/?nosso>

1.3.6 IN PREVIEW: Email notifications are configurable in the Scheduler templates

You can now configure the text of the email notifications sent by the Scheduler with the help of variable text blocks. You can create and store various templates for mail texts.

E-mail template - Default Failure

Mail Template

You can define customized text for notifications sent by Scheduler including variable text blocks

Subject:

Jedox Task \${taskName}

Body:

Jedox Task \${taskName} execution failed.

Error message:

\${errorMessage}

Click a button to insert a text block at the cursor position

Task name

Task status

Start date

Start time

End date

End time

Duration

Error message

ETL job name

ETL project name

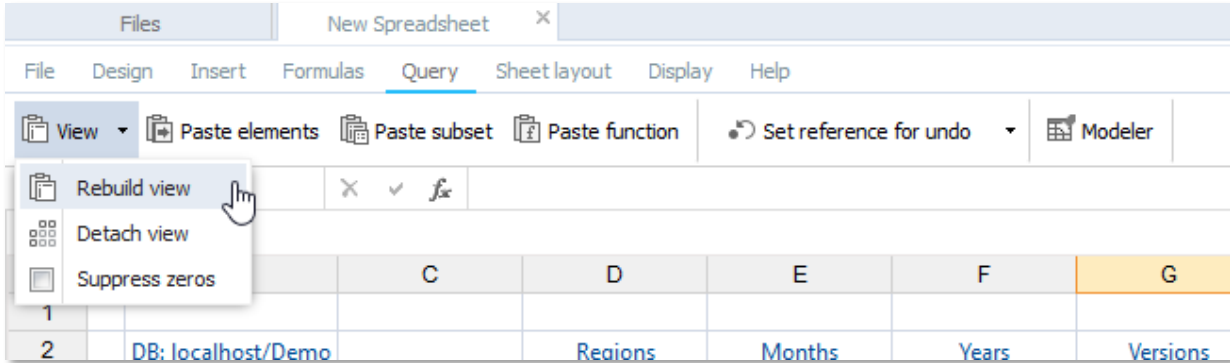
Save

Reset

1.4 Jedox Web Spreadsheets

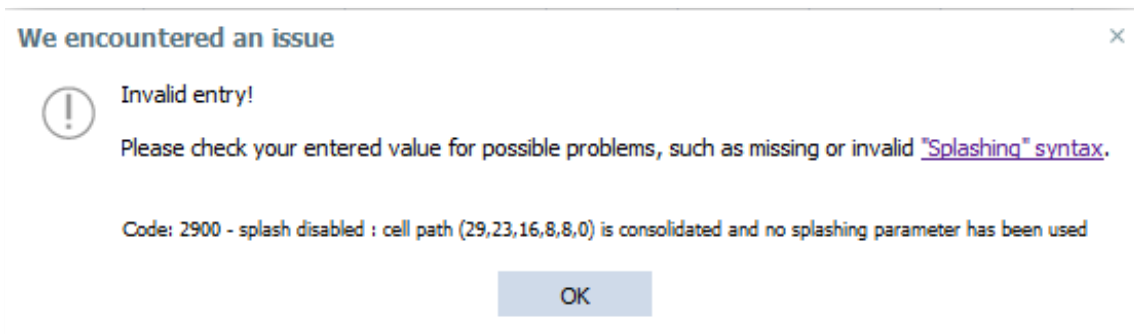
1.4.1 New handling of the button "View" in simple ribbon

The button is now named **View** and opens the **Paste view** dialog directly. Clicking on the down arrow opens a dropdown menu that allows you to **Rebuild view**, **Detach view**, and **Suppress zeros**. In previous versions, the button was named **Create View**.



1.4.2 Improved error message for writeback errors

The error messages displayed when you use the wrong syntax for entering data in consolidated cells now links to a Knowledge Base article with details about the error. The message also displays a detailed reason for the error.



1.5 Jedox Integrator

1.5.1 ATTN: Connection type MaxDB is deprecated

As announced in What's New 2018.4, the connection type MaxDB is deprecated in Jedox 2019.1, which means that no more connections of this type can be created in Integrator. As of the next release (2019.2), existing MaxDB connections will no longer work.

1.5.2 ATTN: Connection type JedoxXMLA to be deprecated

Due to the deprecation of the [ODBO connector](#), Integrator connection type JedoxXMLA is also being deprecated. Connections of this type will not be available as of Jedox 2019.3.

1.5.3 ATTN: Function type Java is to be deprecated

The FieldTransform function of type Java is to be deprecated. It will not be available in the next version of Jedox (2019.2).

1.5.4 New connection type: CosmosDB

With this connection type, it is possible to connect to Azure Cosmos DB, which is a globally distributed, multi-model database service that stores different types of items in various types of containers, depending on the API used. Jedox supports the APIs for **SQL** and for **MongoDB**.

1.5.5 New extract type: CosmosSQL

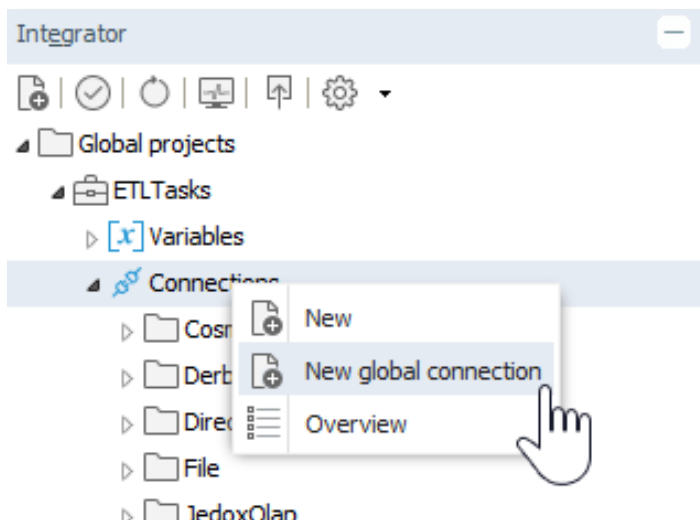
This extract type retrieves data from Azure Cosmos database services with SQL API.

1.5.6 Global Connections

There are now new ways of creating and modifying Jedox Connections in Integrator projects.

Connections context menu: right-clicking on the Connections item in the Integrator navigation pane shows the option **New global connection** (see screenshot below). Clicking this option opens a list of available global connections in the Integrator project. Only the name and the description of this Integrator connection can be changed; all other settings are taken dynamically from Administration→Connections.

Note: Integrator variables that are defined on a project level can't be used to set properties in a global connection.



Administration→Connections: here you can create connections of any type that can be used as a reference in Jedox Integrator. The connections that are defined here can be used by multiple Integrator projects. Connection type JedoxOlap is used in all Jedox components, while type ODBC is used only in Jedox Web. All other connection types are used only in Jedox Integrator. Permissions can also be defined here.

1.5.7 Escaping of variable definitions

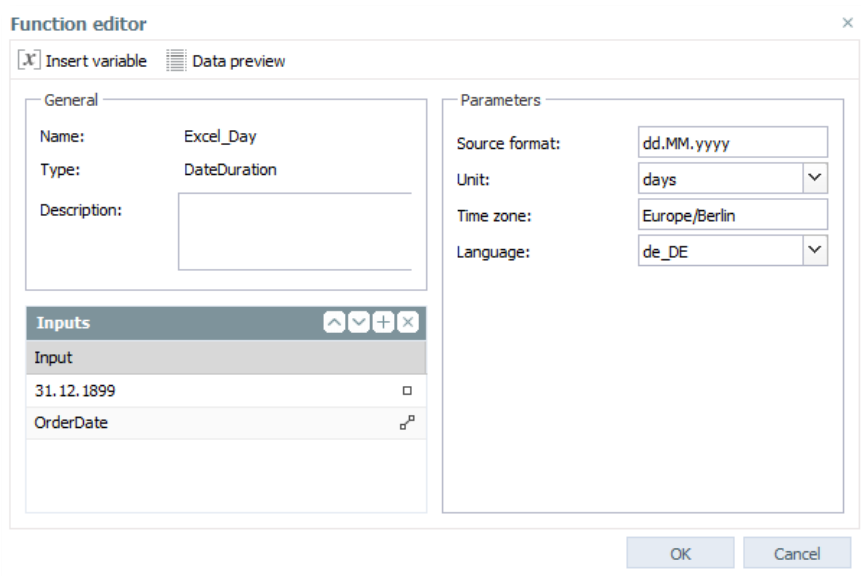
Integrator variables, which are expressed in the form **\${varname}**, can now be escaped, or treated as literal characters, by using the form **\$\${{varname}}**. For example, the expression **\$\${{xy}}** would be interpreted literally as **\${xy}**.

This feature can be especially useful in rule templates that are created by an Integrator job.

1.5.8 New language formatting supported for date functions

The DateDuration function in Field Transform has been re-implemented to fix several issues, including allowance for Daylight Savings Time. It also has an additional language parameter that parses dates for different locales.

DateFormat and DateDuration functions now offer country-specific localization for all Jedox-supported languages. For example, English can be selected as en_US or en_UK, and German can be selected for de_DE or de_AT.



1.5.9 New API: Cube.loadCell

There is a new Integrator Scripting API to call the OLAP cell/replace method, which writes a single value to a single OLAP cell. Spoiler alert: **a future version** of Jedox will take this technology one step further, allowing single-cell changes in OLAP audit logs.

1.5.10 Password encryption in Integrator projects

Passwords in local connections inside of an Integrator project are now encrypted inside the project definition, specific to the environment where they originate. As such, passwords in connections must be adjusted when migrating a project (xml) from one system to another.

1.6 Jedox Excel Add-in

1.6.1 IN PREVIEW: Jedox Web Subset Editor can now be enabled in the Excel Add-in

You can enable Jedox Excel Add-in to paste a subset from Jedox Web. To do this, you must set a DWORD 32 registry key in the Registry Editor.

1.7 Setup

1.7.1 New syntax for logging in OLAP server

In 2018.4, a new logging syntax was introduced that uses the syslog protocol. With Jedox 2019.1, Setup now automatically adapts old entries to the new syntax.

1.8 Technical health

In Jedox Version 2019.1, the following components were updated:

Component	Version
Apache	2.4.38
PHP (Apache)	7.2.14
PHP (SVS/SSS)	5.6.39
Tomcat	8.5.37
OpenJDK	11.0.1

1.9 Tasks implemented since release 2018.4

The following issues (features, tweaks, and bugs) reported in Jedox 2018.4 have been fixed/implemented in Jedox 2019.1. The development team thanks those customers and partners who have reported issues.

Component	Tickets
OLAP Server	85
SVS	1
Excel Add-in	39
Office Add-in	0
Client Libs	16
Integrator Server	92
Jedox Web	239
Jedox Mobile	22
Jedox Cloud	51
Demo content	16
Documentation	94
Setup/CI/CD	55
Models	72