


Managing Databases in Modeler

The Modeler allows you to add new databases (by creating or uploading them) and manage existing ones.


Adding a new database

You can add a new database to the server by creating it directly from the modeler or uploading it.

To create a database directly in the Modeler:

1. Click  and select **Create new database**.
2. The **New Database** window is displayed, prompting you to give your database a name. Use a name that follows the [naming conventions in Jedox](#).
3. Click **Ok**. The database is added to the server, together with attribute dimensions and attribute, right and system cubes.

To upload a database from a file:

1. Click  and select **Upload database**. A dialog is displayed, prompting you to give your database a name, a password (optional) and select the file from which you

want to upload.

2. Select the location of the file: the local file system, the report designer or the server file system.
3. Click **Select**. The database is added to the server.

Uploading from the local/server file system

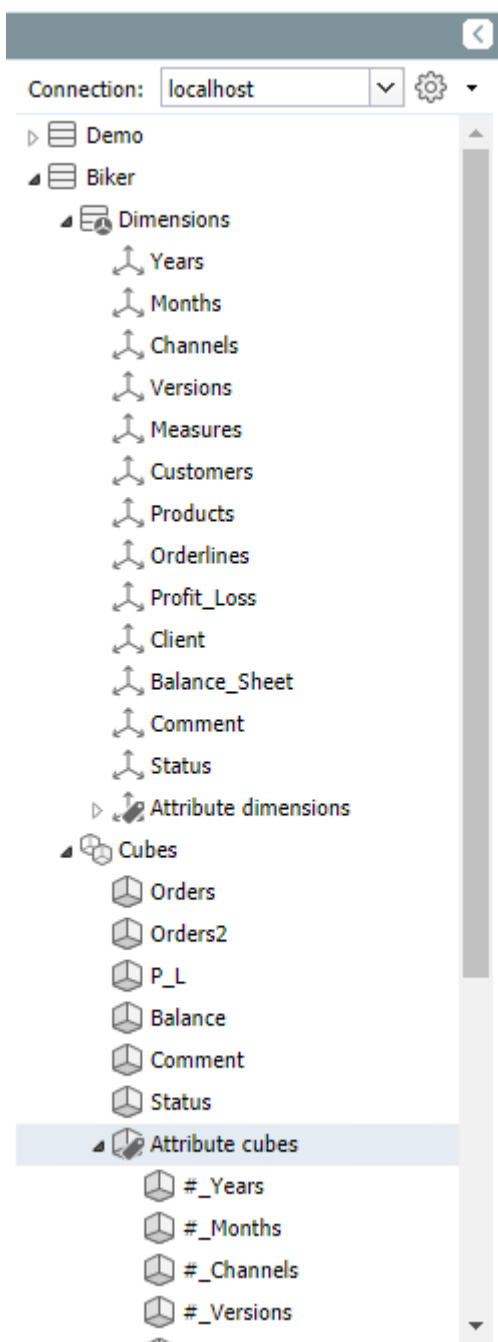
If you want to upload a database from the local or server file system, make sure the file format is .zip (case-sensitive). You can either give the file path or browse your local system for it.

Uploading from Report Designer

The **Upload Database** window allows you to navigate the folder groups in the Report Designer and select database WinZip files for upload.

It is also possible to create a database using [Data-Driven Modeling](#). The uploaded database can be viewed and managed in the Modeler.

Managing Existing databases and their objects



This area lists the existing databases of the connected Jedox In-Memory Database Server. You can expand/collapse each item to display the following:

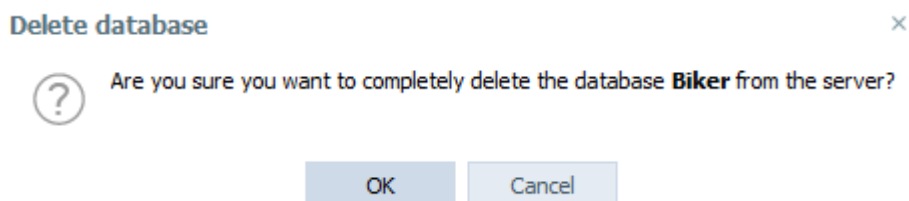
- Dimensions
- Cubes
- Attribute cubes
- Rights cubes
- System cubes

After selecting an item, the corresponding details are displayed on the right of the screen.

By right-clicking on a single object, you can access the corresponding [context menu commands](#).

Deleting a database

You can delete a database by right clicking it in the modeler and selecting **Delete**.



Click **Ok**. The database is deleted from the server.

Important: Deleting a database from the server cannot be reverted.
