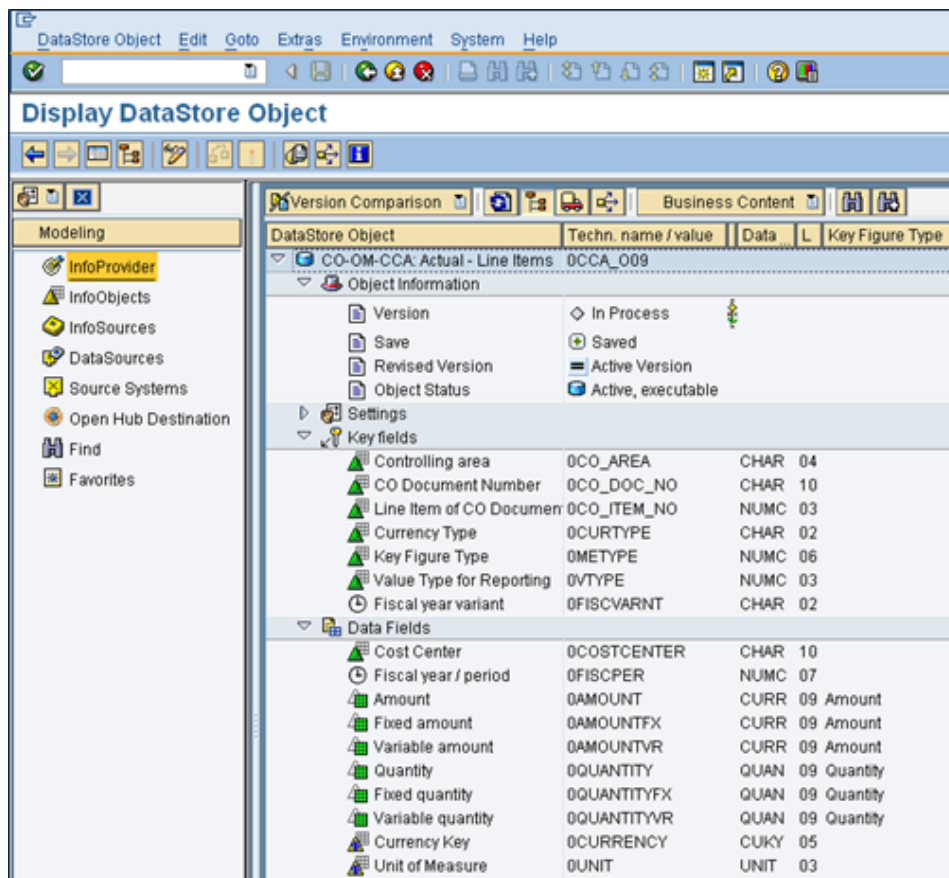


SAPBIDataStore Extract

This extract retrieves transactional data stored in Data Store Objects (DSO). A DSO is an architectural component of a SAP BW system with a flat structure (flat table) and no star schema concept, such as InfoCubes. It generally contains granular data on a highly detailed level necessary for line item reporting. During the staging process, it is loaded before InfoCubes.

Note: with this extract type, it is not possible to extract data from SAP Advanced DataStore Objects (ADSO) of a SAP BW on a HANA system. This can be done by using a SAPHana connection and a Relational extract by generating the corresponding SAP HANA views.



Main settings

Connection	Name of the SAP connection.
Datastore	Name of the Data Store Object
Filter	Filtering criteria for each field of the DSO (optional). The filtering criteria are described in the article Filtering with SAP Connector .
Export data fields	Fields of the DSO that are extracted. Key fields and data fields are handled in the same way.

Advanced settings

Bulk size	Size of blocks for Jedox In-Memory DB Server write requests.
Use caching	Memory, disk, or none (default). See Caching in Extracts .

Example:

Filter:

Field	Filter type	Operator	Value
0CO_AREA	accept	eq	1000
0FISCPER	accept	bt	[2006001,2006003]
0CURTYPE	accept	eq	10
0VERSION	accept	eq	000
0TYPE	accept	ep	010

Export data fields:

Field	Name	Default
0CO_AREA		
0COSTCENTER		
0COSTELMNT		
0 FISCPER		
0AMOUNT		
0QUANTITY		

Result:

0CO_AREA	0COSTCENTER	0COSTELMNT	0 FISCPER	0AMOUNT	0QUANTITY
1000	0000001000	0000400000	2006001	94.2000	0.000
1000	0000001000	0000416300	2006001	1961.8200	0.000
1000	0000001000	0000430000	2006001	13650.3700	0.000
1000	0000001000	0000435000	2006001	1123.0300	0.000
1000	0000001000	0000440100	2006001	2741.7400	0.000
1000	0000001000	0000449000	2006001	26.0300	0.000
1000	0000001000	0000451000	2006001	3022.6600	0.000
1000	0000001000	0000466000	2006001	1148.3800	0.000
1000	0000001000	0000470000	2006001	3388.0300	0.000
1000	0000001000	0000471000	2006001	2107.2400	0.000