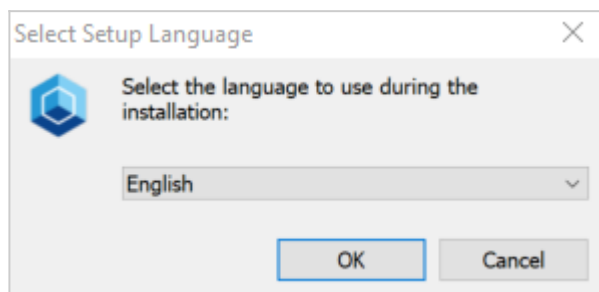


Excel Add-in Installation (Client Only)

For Jedox users who are accessing the In-Memory DB from a client computer using Excel, advanced setup should be selected during installation. The following steps describe this process. For large-scale installations, see [Silent Setup for Automated Software Distribution](#).

Note: the Excel Add-in client must be the same release number as the Jedox server.

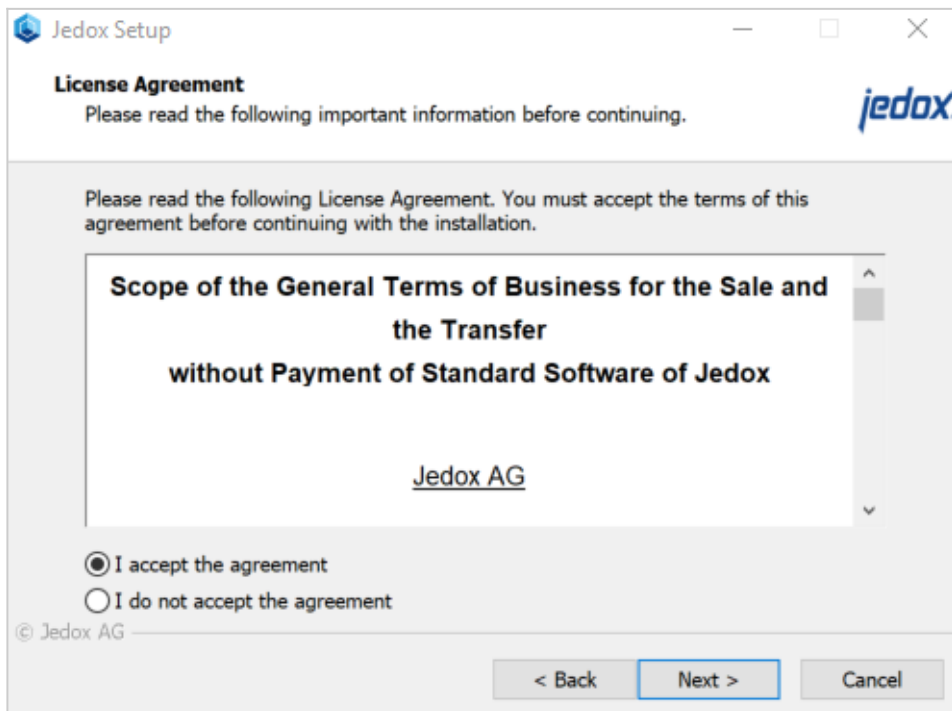
Step 1 - [Download](#) and run the current Jedox Setup file for Windows. Select the language for installation:



Step 2 - Jedox Setup Wizard:



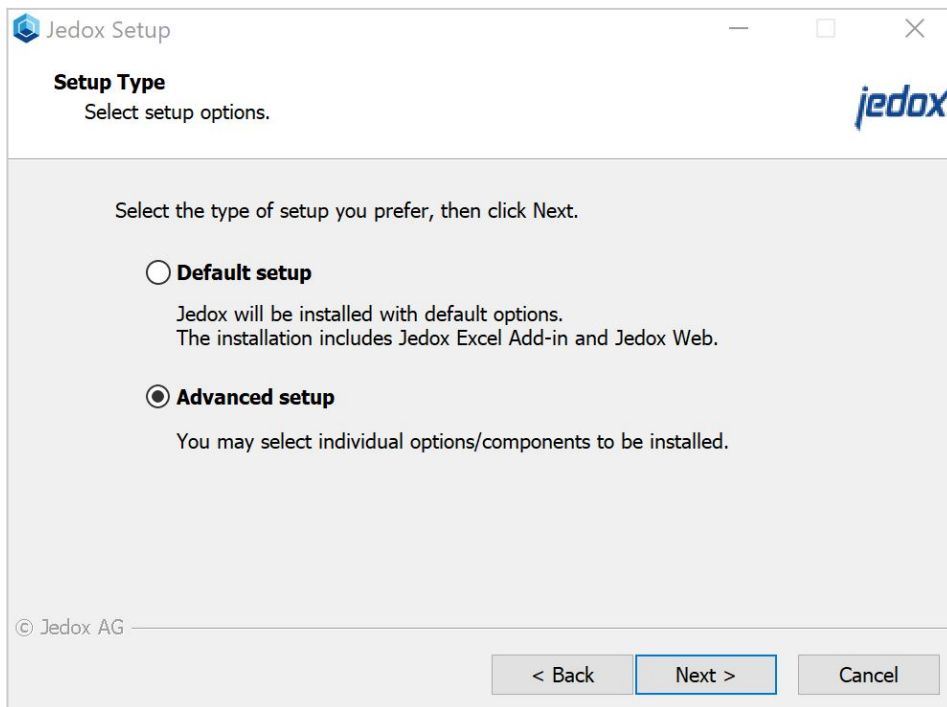
Step 3 - License Agreement:



Step 4 - Setup type

If setup has **not** detected a Jedox installation on the computer:

Choose **Advanced setup** from the next screen and click **Next**.



If setup **has** detected a Jedox installation on the computer:

Choose the type of setup you prefer:

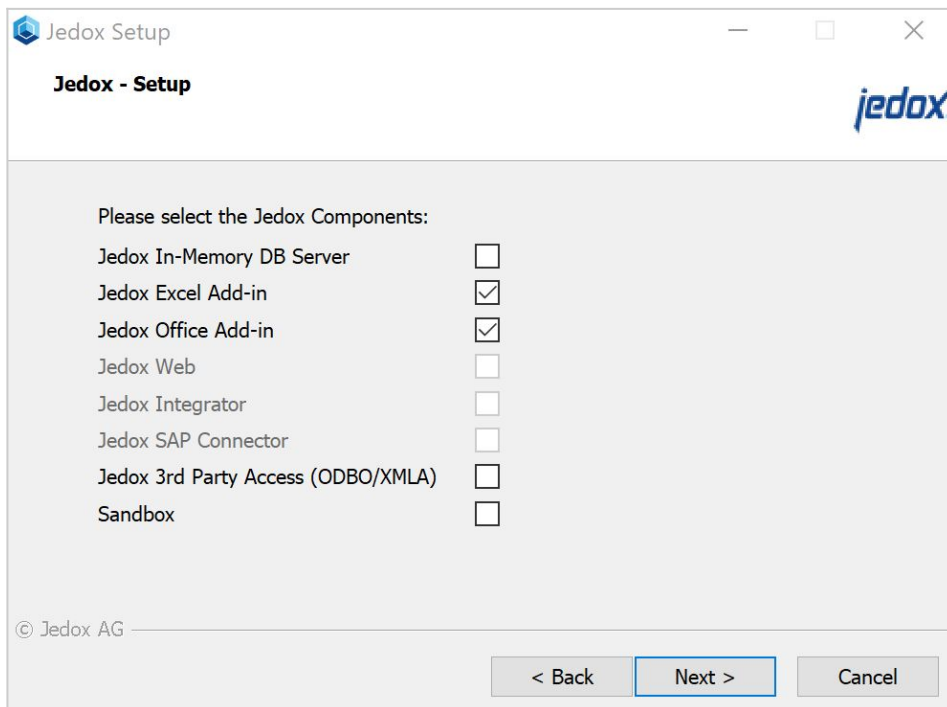
- **Repair / Update**

(Displays the previously installed components and allows a new selection of components.)

- **Delete**

Uninstalls the existing Jedox installation and then quits the setup.

Step 5 – At the next screen, select **Jedox Excel Add-in** and, if desired, **Office Add-in**.

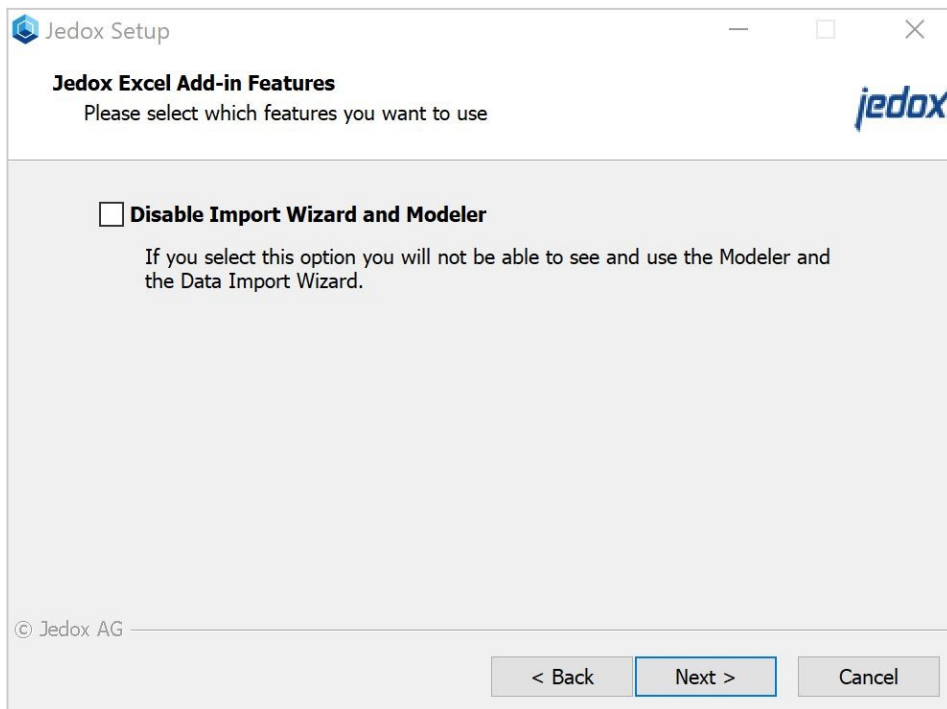


Step 6 - Select the destination directory for the installation.

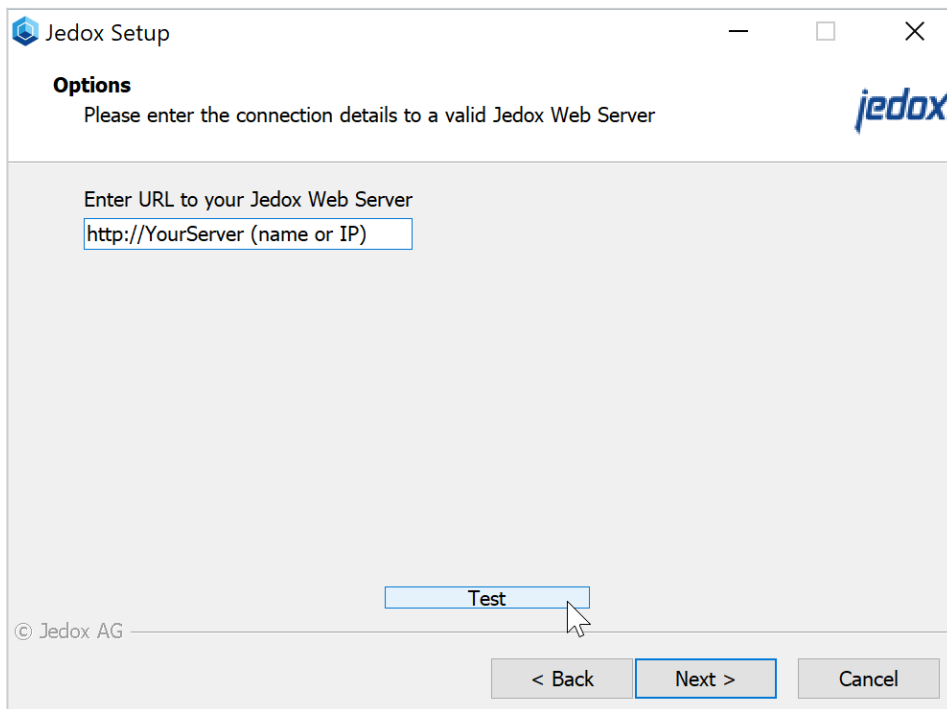
Step 7 - Definition of the user access:

- **Anyone who uses this computer (all users)**
- **Only for the current user**

Step 8 - Option to disable the Import Wizard and the Modeler for Jedox Excel Add-in. This option prevents the user from writing to the database. This option is unchecked by default.



Step 9 - Enter a valid Jedox Web Server connection, then click the **Test** button to test the connection. If the connection is valid, click **Next**.



Step 10 - Enter the user's connection credentials and select Windows Authentication, if desired. For more information on Windows Authentication, see [SSO Overview](#). Click **Next** to complete installation.

Jedox Setup

Jedox In-Memory DB Server Connection
Specify connection details to Jedox In-Memory DB Server

Please enter the connection credentials for your Jedox In-Memory DB Server

Name:

Interface:

Port:

Use Windows Authentication

© Jedox AG

< Back Next > Cancel