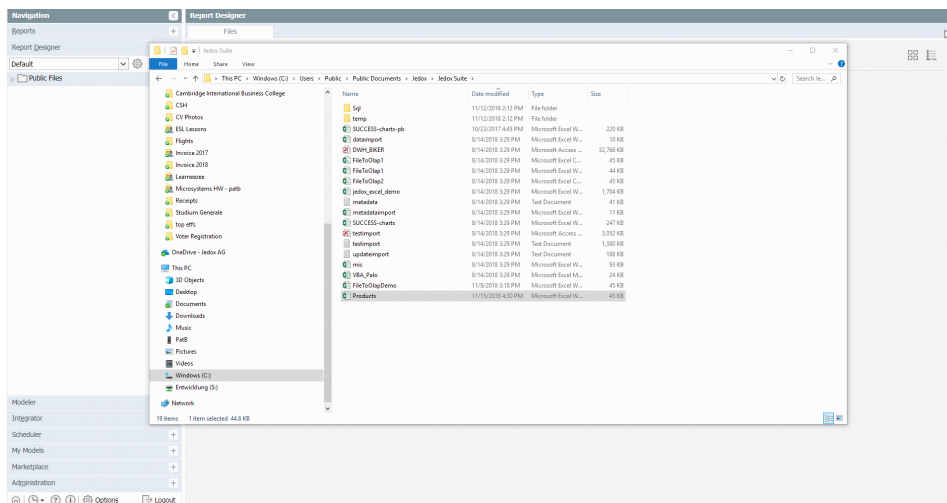


Data-Driven Modeling in Jedox Web

Data-driven modeling in Jedox Web is an innovative process that enables you to analyze existing data earlier and faster. Instead of creating data cubes manually, data-driven modeling allows you to generate and fill a new Jedox data cube with your existing data in CSV or Excel content. Jedox models the data cube from existing data automatically and intelligently. Additionally, data-driven modeling creates a complete Jedox Integrator (ETL) script that can be further specified and used to populate the data cubes on a periodic basis.

Simply upload data from your ERP, CRM, or other source systems in an Excel file. You can even drag the data file directly into the Report Designer. Jedox analyzes the structure of the file and automatically creates a database and a project in seconds. Smart, data-driven modeling automatically recognizes dimensions and data types. You can modify the structure of your model using intuitive drag-and-drop functionality.



Configuration requirements

Jedox Web and Jedox Integrator must be installed. Data-driven modeling is by default set for a maximum file size of 128 MB. This default value can be changed in the file `<install_path>\httpd\php\php.ini` in the lines `post_max_size` and `upload_max_filesize`. To disable the limit, set the `post_max_size` value to 0.

Rights requirements

A user requires delete (D) rights on the following rights objects: database, cube, dimension, dimension element, cell data, `ste_files`, `ste_etl`, and `ste_reports`.

Next steps:

- [Preparing source data for Data-Driven Modeling](#)

